

CONTEMPORARY DESIGN THROUGH SIMPLE TECHNIQUES

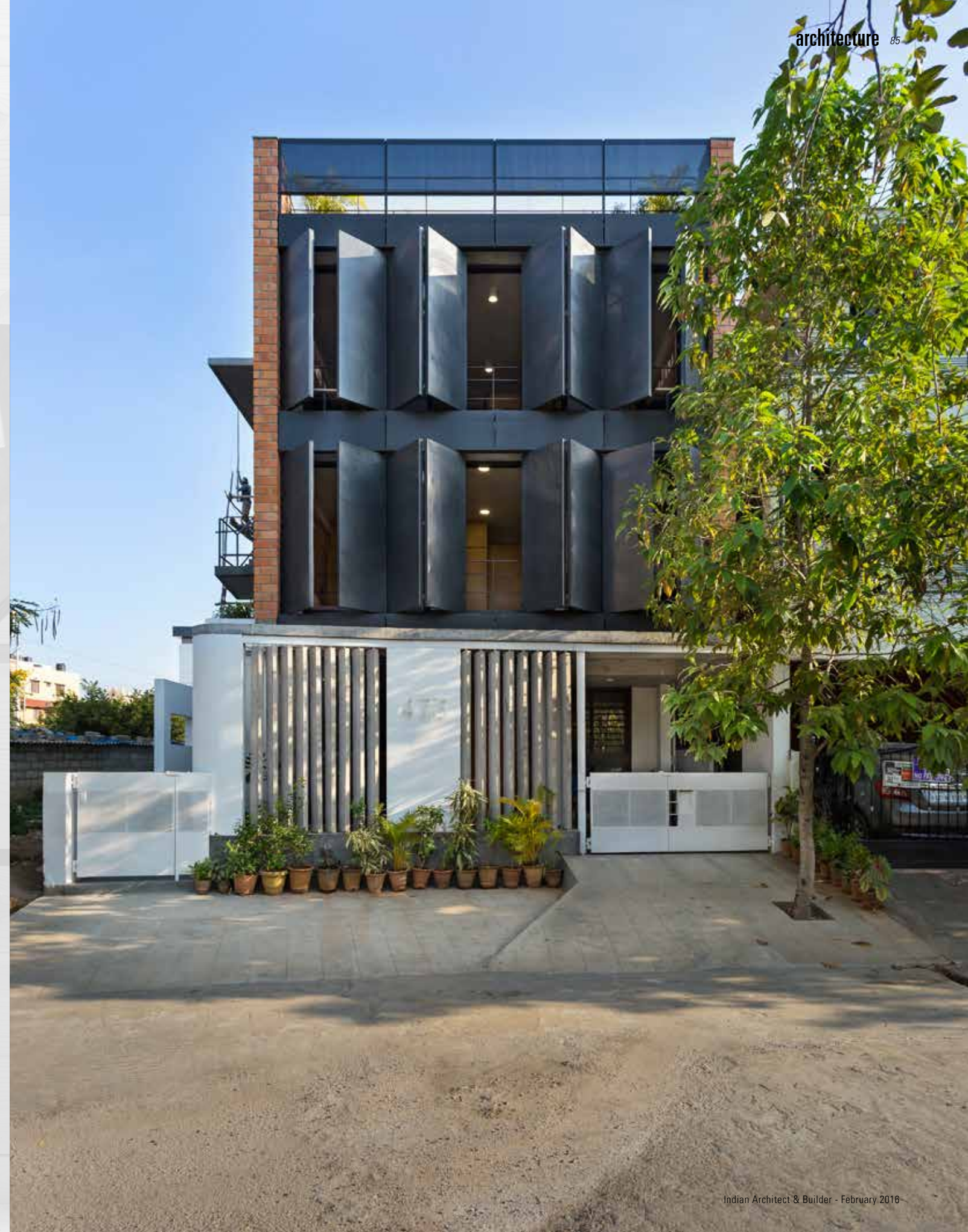
Between Spaces Studio, Bangalore

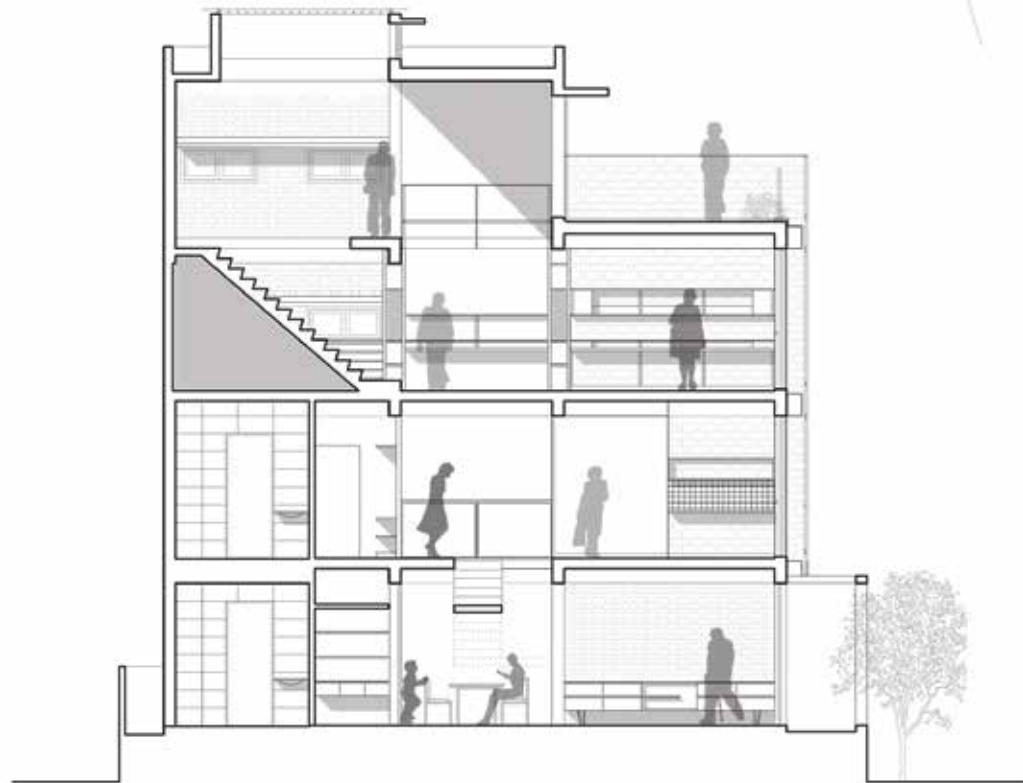
The architect's studio displays an innovative use of modest principles combined with fresh techniques to create a subtle and comfortable work environment.

Text: Meghna Mehta | Photographs: courtesy Kunal Bhatia | Drawings: courtesy BetweenSpaces

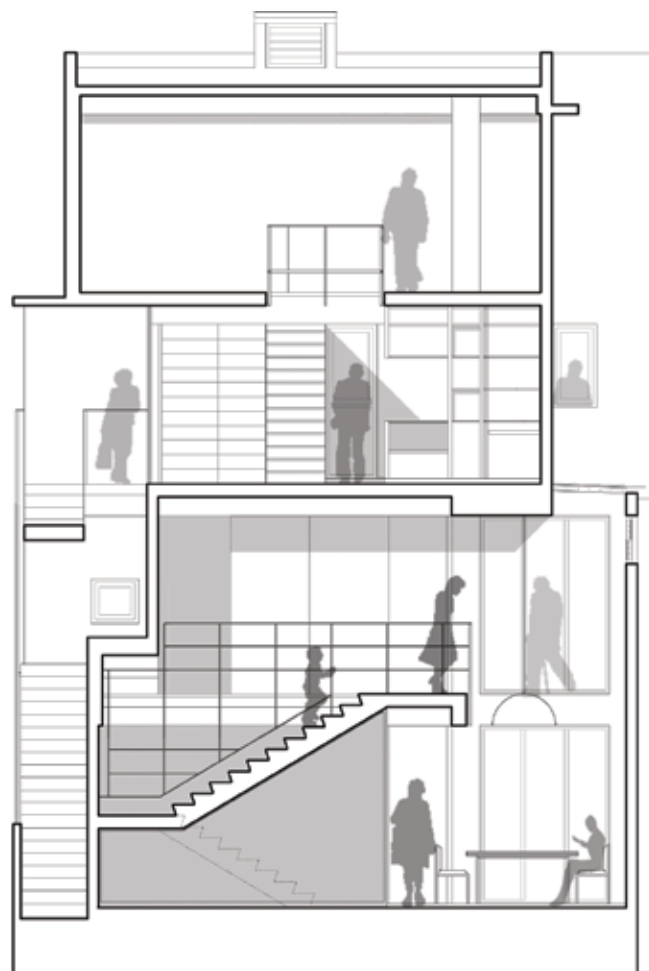
Atypical to any design approach, the project displays a strong sense of desire to get away from the dogma of façade architecture by responding to our grass root principles of keeping it simple, engaging and blending material palette with contemporary undertone. It is our attempt to get a slice of that borrowed landscape from the street and a slice of sky for ourselves in the tight urban condition.

Between Spaces is an architecture studio started in 2011 by Divya E and Pramod Jaiswal. Divya studied in Bangalore and worked with Arya Architects in Ahmedabad and thereafter with Hundredhands from 2006 to 2010. Pramod studied in Bangalore and worked under V K Giridhar and with Hundredhands from 2005 to 2011.

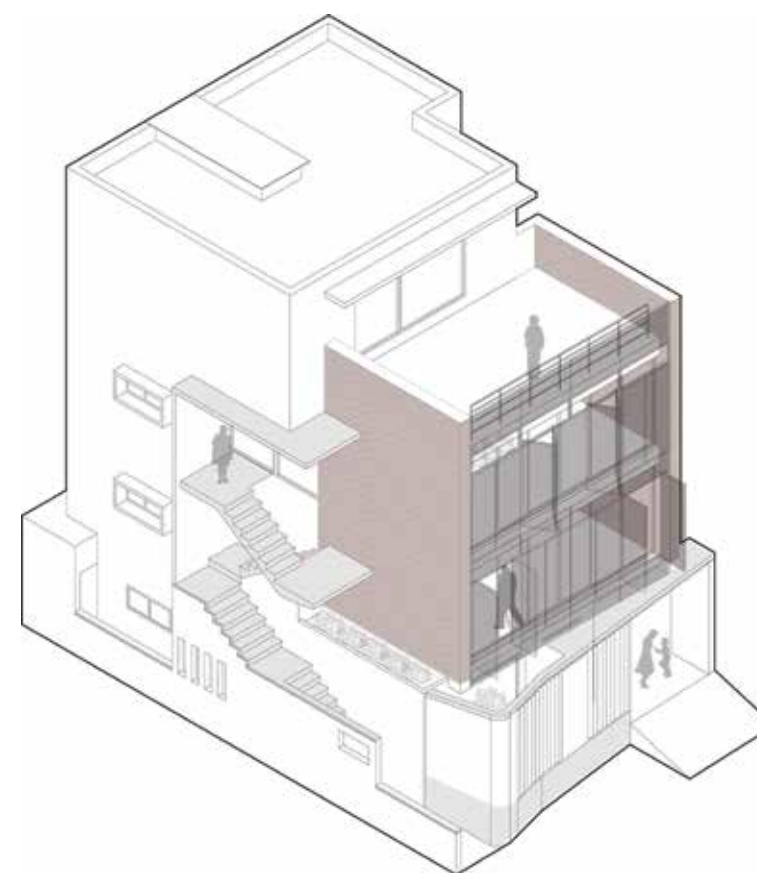




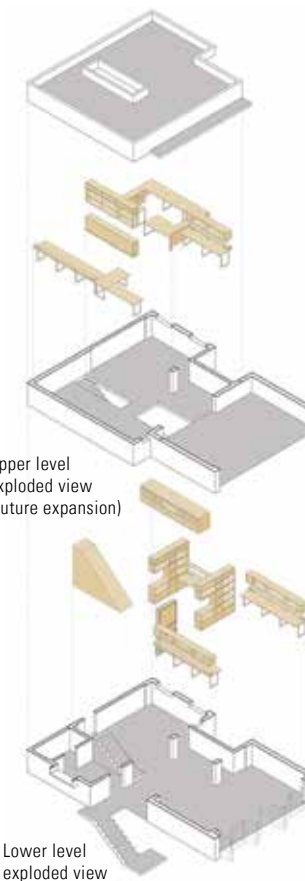
↑ SECTION 1



↑ SECTION 2

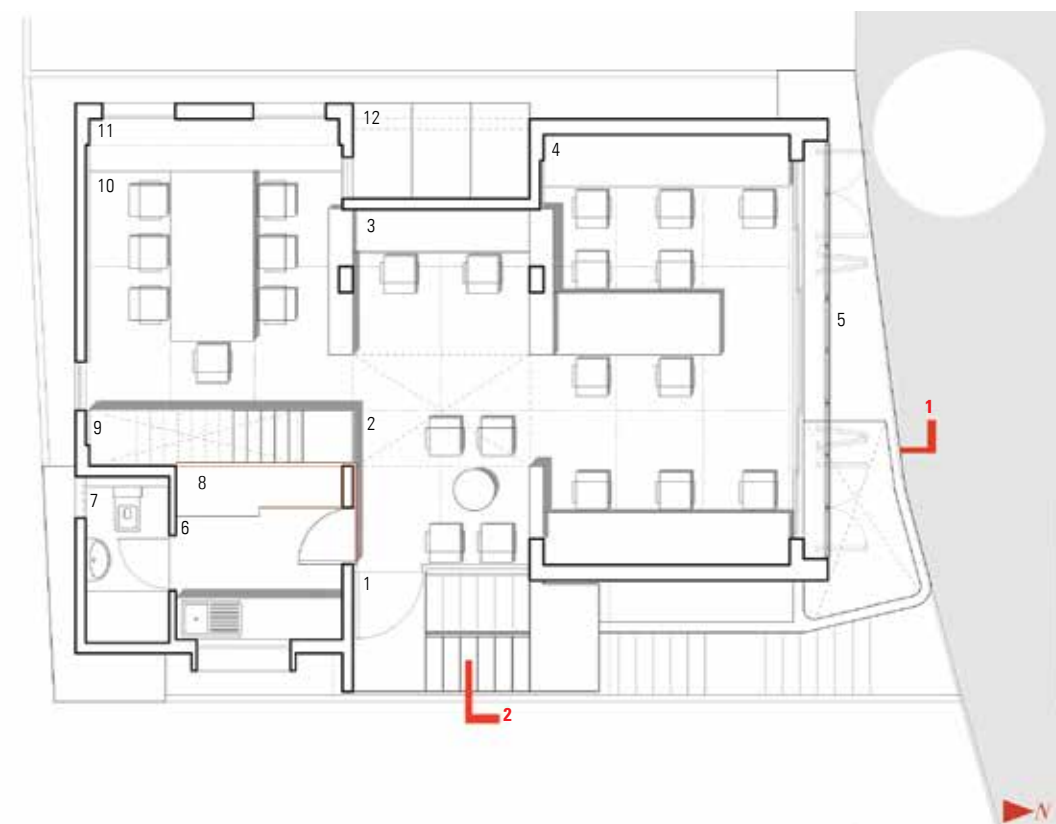


↑ EXPLODED VIEW

Upper level
exploded view
(Future expansion)Lower level
exploded view

- Legend
Lower level
1. Entrance
 2. Waiting
 3. Reception
 4. Studio
 5. Sliding operable screen
 6. Pantry
 7. Toilet
 8. Printer and UPS rack
 9. Material storage / server
 10. Conference
 11. Flat file storage
 12. Skylight below

↑ LOWER LEVEL PLAN





↑ At every possible juncture, an attempt has been made to keep the materials in their natural form as much as possible.



Built on a 30'x40' north facing plot in the city of Bangalore, the program accommodates the architects own house on ground and first floor level and her studio space on the upper two levels, with a separate access to the studio in the North East corner.

The spatial planning of the house is done in order to take maximum advantage of the uninterrupted view towards the tree lined street on the northern side. Owing to the tight site condition and lack of privacy from the neighbour's property, the two bedrooms in the SW corner open out into a double height dining area with a clear storey window for ventilation and skylight above for natural light.

The two levels of the studio have been visually connected with a central cut out over the waiting area. The layout has been designed to facilitate an open studio culture, creating spaces which will encourage interactions between the team members and the principal architects. The entire width of the studio space in the northern side has 10 work stations and has been interpreted as a covered veranda thinning the line between the inside and outside.

The north side 20'x 8' sliding aluminium glazed window with an external protective layer of perforated sheet shutter panels and sliding / folding mechanism allows natural light, view of the street scape and ventilation into the house and the studio space.

The project becomes an interesting exercise to understand how the building interacts with the street. The precast concrete fins enclosing a small garden on the NE corner and defining the entrance foyer brings the building closer to the street. The concrete fins, the wire

↑ The interior design of the office space and the residence is an extension of the architectural aesthetics of the building.



↑ The furniture units are more like objects kept in the foreground of the building shell from inside.





↑ The textures of the materials are always contradicting, yet tend to exhibit certain sense of visual cohesion.

cut brick walls in rat trap bond and the perforated metal sheet sliding folding shutters add certain ruggedness to the building and at the same time bring lightness into the structure. The simple strategy of a single material (perforated sheet shutters) helped in achieving a very minimal yet dynamic façade. The interior design of the office space and the residence is an extension of the architectural aesthetics of the building and at every possible juncture; an attempt has been made to keep the materials in their natural form as much as possible. The furniture units are more like objects kept in the foreground of the building shell from inside.

Locally procured wire cut and kiln burnt bricks, IPS flooring (in studio levels), Yellow oxide flooring, granite stones has been used. The smooth two toned laminate finish built in furniture's in the residence lay in pleasant contrast with the form finish concrete slabs, beams and the unplastered brick walls.

In the office level, the two units on either side of the reception area demarcate the conference room in the SW corner and the studio space in the northern side. Both these units though physically separate the spaces, are visually porous and double as storages and book shelves. The panelling to encase the pantry and printing area is done in pine

wood over ply base. The space under the stairs going to the upper level has been utilised as the material library and server rack. The conference room has a deep unit with flat file drawers to store large drawing sheets and stationeries. The textures of the materials are always contradicting, yet tend to exhibit certain sense of visual cohesion. The sal wood posts accentuate the relatively bland and light grained finger jointed rubber wood planks. 4mm shadow gaps has been introduced between two layers of materials of same or different kind adding a character to the surfaces. The upper floor which opens out to a terrace space has been left for future expansion. ■

FACT FILE:

Project Name	:	Between Spaces Studio
Location	:	Bangalore, Karnataka
Plot Area	:	1200 sqft
Office Area	:	1400 sqft
House Area	:	1700 sqft
Design Team	:	Divya Ethirajan, Pramod Jaiswal, Reema Dhiman, Anagha, Kevin George
Interior Contractor	:	Rahul Associates
Structural Consultant	:	Kalkura Associates
Project Completion	:	July 2015



The simple strategy of a single material helped in achieving a very minimal yet dynamic façade.